

## 2014-15 Officer and Board Nominations

In accordance with the Bylaws of Congregation Beth Shalom, the Nominating Committee presents the following for officer elections for a two year term.



President: Norman Kahn, Jr.  
 Immediate Past President: Mike Abrams  
 Religious Affairs VP: Art Federman  
 Treasurer: Alicia Klein  
 Education VP: Jason Krakow  
 Executive VP: Richard Simon  
 Secretary: Shira Zigler

The Nominating Committee also presents the following for election to the Board of Directors: For a three year term, 2014-17: Brian Brockman, Art Federman, Norman Kahn, Jr., Linda Lessner, Cathy Newman, Richard Simon and Wendy Sitzmann. As stated in the Bylaws, additional qualified persons\* may be nominated by a General Member of the Congregation in good standing upon submission of a written petition containing the signatures of at least twenty (20). Petitions should be sent to: Kurt Kavanaugh, Nominating Committee Chairman, c/o Congregation Beth Shalom, 14200 Lamar, Overland Park, KS 66223, no later than Monday, June 2.

Other members of the Board of Directors whose terms will continue are: Rachel Krantz, Sarah Beren, Chuck Gasser, Stephen Feinstein, Mike Abrams, Cindy Daniels, Kurt Kavanaugh, Alicia Klein, Harryette Cooperman, Rhonda Fromm, Dayna Gershon, Dana Schwartz, Daniel Rosenthal, Rhea Salasche, Shira Zigler, and Jason Krakow. Appointed member is Hanan Hammer. Nominating Committee is: Kurt Kavanaugh, Chairman; Cindy Daniels, Rod Minkin, Shira Zigler, Rhea Salasche, Todd Clauer, Alana Muller, Meg Adler, Michael Rogovein, and Miriam Kaseff.

The election will be held during the Congregation's Annual Meeting on Sunday, June 22 at 10:00 am in Goldsmith Hall. More information to follow.

\* A qualified person for the Board of Directors is a General Member in good standing who is not a member of the board or similar body of any other synagogue in the Greater Kansas City area. A qualified person for an officer position must meet certain requirements.

## Shavuot Service Schedule

### Tuesday, June 3

6:00 pm: Minchah/Ma'ariv	Goldsmith Hall
8:15 pm: All-Night Community Program	KI Synagogue
See page 10	

### Wednesday, June 4

9:30 am- Shavuot Services	Goldsmith Hall
6:00 pm- Minchah	Goldsmith Hall

### Thursday, June 5

7:00 am- Shavuot services w/Yizkor	Goldsmith Hall
9:30 am- Shavuot Services w/Yizkor	Goldsmith Hall
6:00 pm- Minchah	Goldsmith Hall

**End of Shavuot-9:25 PM**

## Create Your Jewish Legacy

We did not find this world desolate when we entered it. "As our ancestors planted for us before we were born, so do we plant for those who will come after us." (Ta'anit 23a)

On Shabbat morning, May 17, we will be recognizing members of our congregational family who are planting for the future by making a bequest or other planned gift to Beth Shalom. Join us as we say thank you and consider making your own commitment. If you will be attending this service, please contact Jill Goldstein at [jgoldstein@bethshalomkc.org](mailto:jgoldstein@bethshalomkc.org) or 913-647-7286.

No matter what your financial means, you can help ensure a bright and dynamic future for CBS by:

- Making a gift today of cash or long-term appreciated securities
- Making a gift today that will pay you income
- Making a bequest in your will or trust
- Naming Beth Shalom as a beneficiary of a life insurance policy or retirement plan

Beth Shalom is a very special place. It is where you may have been educated; where you have lived your Jewish values; where you have developed life-long friendships and made some of your fondest memories; and where you have turned for strength, support and celebration. Help ensure that our synagogue will continue to meet the needs of all of our families for many generations to come. For more information, contact Harold Kaseff, Chair, Beth Shalom's Planned Giving Committee at [Harold.k@mymetrotitle.com](mailto:Harold.k@mymetrotitle.com) or 913-859-0530.

# From the Rabbi's Study

## In the Midst of Hatred: American Grace



A couple of weeks have passed since gunfire tore into the flesh of our community. In the days following this tragedy, two ideas came to mind: "Multi-generational memory," and "Grace." On the surface, we think of "multi-generational memory" as a Jewish idea, and "grace" as a non-Jewish (perhaps, even as a specifically Christian) idea.

This is because we don't often use the word "grace" in Jewish conversation, but we will often use the term "*L'dor va-dor*" ("from generation to generation") or "*b'chol dor va-dor*" ("in every generation"). Grace is, however, a Jewish concept, and we saw it in the Torah portion we read during the Shabbat of Passover. Grace is a gift from God that we receive regardless of our merit – in Hebrew, it is "*chen*."

After Moses sees the tragedy of the Golden Calf, he smashes the tablets of the Torah on the ground. Moses pleads to God: "Now, if I have truly found grace in your eyes, pray let me know Your ways, that I may know You and continue to find grace in your eyes." (Ex. 33:13).

When we live in times of uncertainty, we pray for grace, and we pray to know God's ways. During the Passover Seder we say the words "*B'chol dor va-dor*. In each and every generation people rise against us. But,

the Holy One, Blessed be He, saves us from their hand." It is easy to see the attacks on Village Shalom and the JCC as the manifestation of this prediction. However, this is not completely the case.

In past generations, and in other lands, the chief of police would not be invited as the guest of honor to the communal Passover Seder as he was here this past week. In times and lands far away, the chief of police was, if not directing the pogrom, at least turning a blind eye. In past generations, rabbis did not get personal phone calls from their members of congress with messages of love and support.

No, in each and every generation, if there were memorial services for victims of anti-Semitic hatred, stages would not be FILLED with dozens, and dozens, and dozens of police officers who did not need to be on post, elected officials including the Governor, members of Congress, mayors, the US Attorney General and so many clergy, from every faith tradition represented in our city. This is what Robert Putnam, the former dean of Harvard's Kennedy School of Government calls, "American Grace."

On Shabbat of Passover, Jewish communities read Song of Songs (Song of Solomon) which reads: "Love is as powerful as death." (8:6). The

Kansas City community gave this rabbi hope that perhaps this can be the case. We still have fear. We still have anger. We must still be vigilant against anti-Semitism and other hatreds in our community, but there is also more there. We come to God with prayers for help, and prayers of thanksgiving; cries for justice, and recognition of grace.

*David M. Glickman*

**Rabbi David M. Glickman**

[dglickman@bethshalomkc.org](mailto:dglickman@bethshalomkc.org)

This article is a summary of Rabbi Glickman's teaching from the Shabbat of Passover following the shootings at the JCC and Village Shalom. To read the teaching in its entirety, and to read the prayer he wrote following the shootings, visit our website.



## Jewish Adult Education Opportunities

May 1, 8, 22

Munch and Melton

May 3, 10, 17, 24, 31

Locavort

May 7, 14, 21

Learning in Leawood

May 17

Parshat Hashauva

May 21

Downtown Talmud  
Jam

### Contract Renewal Notice

"In accordance with the bylaws of Congregation Beth Shalom, this notice is required to be prominently placed in *The Scroll* when the contract of a member of the professional staff is coming up for renewal." Please be advised that the contract of Rabbi David Glickman is now up for

renewal. CBS members may address any comments to Michael J. Abrams, President, Congregation Beth Shalom, 14200 Lamar Ave., Overland Park, KS 66223, or email your comments regarding Rabbi Glickman to: [ritual@bethshalomkc.org](mailto:ritual@bethshalomkc.org). Your comments must be received by June 2.

# Executively Speaking

## A Tribute to Mike Abrams



It never ceases to amaze me how quickly time passes. It has been an invigorating two years since Mike Abrams

became president of this congregation with humility and soul and with high hopes and expectations from staff, board and members. Since this will be the last article that I will be writing under Mike Abrams' presidency, I wanted to take the opportunity to dedicate this column to him.

From the staff of Beth Shalom... Mike, we thank you for the honor and privilege to work under your leadership. Our Torah teaches us that we do not work alone in our pursuits, but as president you have carried the heavy burden of responsibility and carried it well.

We hope that we have helped in some small way to assist you in your endeavors. You worked hard to build up this wonderful community

that over 700 families call home, "*ha makom k'dushah*," our holy place. You continued to build upon the strong foundation that is Congregation Beth Shalom, and with the sale of Wornall along with our continued balanced budget, helped to sustain us for the future.

Renana, Sam, Moriah and Gabrielle, thank you for sharing Mike with us. We know how time-consuming his role became over the past two years, and all of you get our gold star for "good sharing". Mike, it is our hope that you always go from strength to strength.

We invite and encourage you, our congregation to attend our Annual Congregational Brunch on June 22nd, when we welcome Dr. Norman Kahn, Jr. as president-elect and wish a hearty mazal tov to our new officers and board.

Congratulations to all our May graduates and happy wishes to all our mothers, grandmas and great grandmas for a Happy Mother's Day!



Elaine Levine and Mike Abrams



Erwin Abrams, Phyllis Abrams, Mike Abrams and Renana Abrams

## Youth & Informal Education

**Stefanie Williams, Director | [swilliams@bethshalomkc.org](mailto:swilliams@bethshalomkc.org) | 913-647-7292**

### A Strong Finish!

KCUSY will wrap up the school year with two time honored events: Youth Shabbat and CMT. The first event is the Annual Youth Shabbat with Installations and a Family Style Shabbat Dinner on Friday, May 9.

The evening will begin at 5:00 pm with the installation of the newly elected 2014-15 KCUSY Chapter Executive Board. At 6:00 pm KCUSY

and Kadima will lead Kabbalat Shabbat Services followed by a Family Shabbat Dinner at 7:00 pm.

The delicious dinner will be prepared by the KCUSYers and parents, and parent volunteers are requested to help with the cooking that morning. Please contact Stef to sign-up. If you haven't already done so, please RSVP by Monday, May 5. There is no charge for dinner;

### May KCUSY Calendar

- |       |                                     |
|-------|-------------------------------------|
| May 7 | Wednesday Night Program             |
| May 9 | Youth Shabbat & Installation Dinner |

however donations would be greatly appreciated.

CMT will be held on Sunday and Monday, June 1-2. CMT=Chapter Membership Training -a true bonding experience where we welcome in the new freshmen and say goodbye to our graduating seniors! Omaha USYers will be joining us at Worlds of Fun on Monday.

# Sisterhood

Beverly Newman, President | [shpres@bethshalomkc.org](mailto:shpres@bethshalomkc.org)

Congregation  
Beth Shalom Sisterhood Presents  
The People vs King David  
Saturday, May 10, 7:00 pm  
Goldsmith Hall



Judge Arthur Federman



Stewart Stein



You Michael Abrams

are summoned for the jury in the case of

## THE PEOPLE vs KING DAVID

King David, one of Judaism's heroes, is celebrated in song, story and history. His affair with Batsheva has been debated for years and now King David must face a jury on the charges of adultery and murder of Batsheva's husband, Uriah.

Please join us for an extraordinary evening of courtroom dramatics, as attorney Michael Abrams and attorney Stewart Stein argue the case before Judge Arthur Federman. You, ladies and gentlemen of the jury, will cast your votes and render the verdict!

The evening begins with Minchah at 7:00 pm and will be followed by the Mock Trial, Ma'ariv and Havdalah. We'll end the evening with Sisterhood Board installations, coffee and dessert. Cost:\$10 per person. For more information, contact Kim Matsil, 913-681-2545 or Rhea L. Nadler, 913-530-2151

## Book Club Meets June 25

"Once We Were Brothers is the compelling tale of two boys and a family who struggle to survive in war-torn Poland and a young love that incredibly endures through the unspeakable cruelty of the Holocaust. Two lives, two worlds, and sixty years converge in an explosive race to redemption that makes for an enthralling tale of love, survival, and ultimately the triumph of the human spirit."

We will discuss this book by Ronald H. Balson when Sisterhood Book Club meets on Wednesday, June 25, 7:00 pm at Tina Chapman's home. For further details or to be added to the e-mail list, contact Rowena Turk at 913-649-7098 or at [turk@kc.rr.com](mailto:turk@kc.rr.com).



## Editorial Comments



April 13 was my birthday, and it was going to be a great day. I received many calls wishing me a Happy Birthday.

Then, I received a different kind of call from Cathy, my daughter-in-law: "There has been a shooting at the Jewish Community Campus." I think my heart dropped into my stomach in an instant. After learning that our grandchildren were safe, I focused on who had been shot. As information became available on the internet and CNN, I learned more. I thought of the Talmudic quote: "Whoever destroys a soul, it is considered as if he destroyed an entire world. And whoever saves a life, it is considered as if he saved an entire world." This evil man did not destroy the entire world. He brought our entire community together to celebrate life.

*Bev Newman, Scroll Editor*

## Steppin' Out Welcomes Hazzan Tahl Ben-Yehuda

Our next Steppin' Out program will take place on Sunday, May 4, for Beth Shalom members and all Sisterhood members, singles and couples, 60 and older. (Your friends are also welcome to attend.) The evening begins at 6:00 pm with dinner in Goldsmith Hall. Following dinner, our own Hazzan Tahl Ben-Yehuda will entertain with secular and Israeli music and a "Taste of Hazzanut." Don't miss this special opportunity. For more information, refer to your April Scroll or contact Linda Lessner, 913-897-0122 or [llessner@kc.rr.com](mailto:llessner@kc.rr.com).

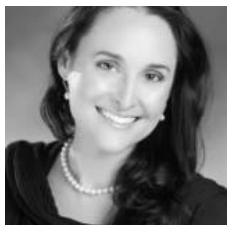
## Sisterhood Opportunities

- May 1, 8 Peltzman Class
- May 7 Board of Directors Meeting
- May 10 Mock Trial: The People vs. King David
- May 13 SafeHome
- May 14 Warm Up America!
- May 28 PrayerWorks

# Polsky Religious School (PRS)

Hazzan Tahl Ben-Yehuda, Director of Congregational Learning | [hazzantby@bethshalomkc.org](mailto:hazzantby@bethshalomkc.org)

## PRS School Year Is A Wrap



Spring is the most hopeful season of all, with the trees in bloom, tulips and daffodils reminding us that life doesn't just

go on. It blooms gloriously despite a long, harsh winter. Since the tragedy at the JCC and Village Shalom, every synagogue in town has welcomed an increased police presence. You should know, though, that our school has also carefully considered our internal security. Doors that had been wide open during school hours will now be closed and monitored by office personnel.

We will buzz parents into the building after school has begun. During the beginning and end of classes, the doors will be open to welcome students, but a few school professionals (probably me and/or a teacher or two) will be at the door to greet students. This will become our new norm.

I have spent this year watching how our school works. While I have instituted a few new programs, such as grade-hosted Shabbat and a different sort of program during the first half-hour on Wednesday afternoons, I did not change the curriculum at all.

I have been studying our current curriculum this year, and I am working on changing the curriculum to fit the changing needs of our learning community and the changing needs of the actual learners, our students! I am very much looking forward to sharing my ideas with you. I will be inviting all PRS parents to a town-hall meeting in the very near future. Please watch the PRS blast for this invitation.

**Erev Shabbat, May 2:** 6 pm-Services & Baccalaureate Dinner

**Sunday, May 4:** Grade K-2 end-of-year program at 9:30 am, and grade 3 Hag HaSiddur at 11 am.

**Wednesday, May 7:** final day of Religious School with a Grade 3-7 program at 5:45 pm.

Watch your August Scroll for information on 2014-15 school programs:

## Tot Shabbat and Shabbat Kids' Club

Shabbat continues all summer long...so will Tot Shabbat and Shabbat Kids' Club! Join us May 17, June 21, July 12, August 2. Tot Shabbat begins at 11:00 am in the lower library reading area. Shabbat Kids Club begins at 10:45 am in Room 114. We are looking for sponsors for "tot" inental Breakfast and Kiddie Kiddush for summer and beyond. A sponsorship is \$36. Please contact Shira Zigler at 312-375-5510 or [shiramichele@yahoo.com](mailto:shiramichele@yahoo.com) if you would like to become a sponsor or make a donation to the Tot Shabbat fund. Thank you for your support!

## Rose Family Early Childhood Education Center

Judy Jacks Berman, Director | [jjb@bethshalomkc.org](mailto:jjb@bethshalomkc.org) | 913-647-7287

### What a year 2013-2014 has been!

Our parent/toddler program and our parent/baby class, both facilitated by Vicki Widman, enjoyed a record number of kids. Everyone had a great time, and I can't wait for them to join our Toddler and Mini school classes!

It's very exciting to see how much the kids have grown at the end of the school year. They start as little kids, shy and unsure. By the end of the school year, they are completely different people who are excited about learning, confident with new activities, and happy to be at Beth Shalom!

Our new PreK program was a tremendous success. The graduating PreK kids learned so much and grew by leaps and bounds. They are able to add, subtract and understand the concept of zero, tell time on an old fashioned clock, write their letters, and recognize beginning and ending sounds. Their social skills are amazing as they navigate through their day, enjoying their friends and truly caring about each other.

Our culminating tzedakah project was packing 150 bags of meals for Harvesters to hand out to kids for

weekend meals. It was a great hands-on experience for our students who learned that some kids aren't as lucky as they are because some families can't afford to buy enough food.

It's always sad to say goodbye to our PreK children as they move on, but they are ready for kindergarten and all their future adventures!

Thank you to Rabbi Glickman, Hazzan Ben-Yehuda and the fabulous faculty who make Beth Shalom Rose Family Early Childhood Education Center the incredible place it is!





# CELEBRATING LIFE CYCLE EVENTS

[Submit your B'nei Mitzvah announcements to be published.](#)

## *Sophie Hani Zinman*

*May 10 / 10 Iyar*



Sophie's parents are Bambi and Ben Zinman. Her grandparents are Karen and Norman Pell of Boyton Beach, Florida and the late Shirley and William Zinman. Sophie attends Center Middle School.

As pets are one of her great passions -she has two cats and a dog- her mitzvah project is volunteering at Wayside Waifs socializing dogs and cats. Sophie participates in Rosh Chodesh, enjoys music, drawing and baking with mom.

Friends and family are invited to worship with the family and attend the Kiddush luncheon following services.

## *Noah William Davis*

*May 24 / 24 Iyar*



Noah's parents are Karen and Matthew Davis. His grandparents are Steve and Mary Davis and the late Paulette Davis, L. Robert and Marsha Polster of Columbus, Ohio. Noah's siblings are Abbie and Olivia Davis.

Noah attends Overland Trail Middle School and his activities include baseball, basketball, and summers at Camp Herzl.

Noah will be volunteering his time at the JFS food pantry. He will also be participating in Braden's Hope, a foundation that supports childhood cancer research. For every hit he gets in baseball this summer, pledges will go towards this project. Friends and family are invited to worship with the family and attend the Kiddush luncheon following services.

## *Nathan David Turtledove*

*June 7 / 9 Sivan*



Nathan's parents are Stacie and Robert Turtledove and his grandparents are Francine and Loring Fluke of Massachusetts and Claudie Meents of Johannesburg, South Africa. Nathan's sister is Ally Turtledove. He attends Pembroke Hill Middle School and enjoys tennis and golf.

For his Bar Mitzvah project, there will be a "Give Lunch" food drive at Pembroke Hill Middle School. Nathan will also volunteer at Harvesters Community Food Network.

Friends and family are invited to worship with the family and attend the Kiddush luncheon following services.

### **High School Graduate List**

Please send the name of your high school graduate and where he/she will be attending school next year to Dahlia Berger at [dberger@bethshalomkc.org](mailto:dberger@bethshalomkc.org) by May 5. We would like to list your child in the June Scroll.

### **Lost and Found**

Did you lose something at Beth Shalom? Check our Lost and Found drawer in the office. Tell us what you lost, and we will see if it's here. Call 913-647-7279 and ask Dahlia to check the Lost and Found for your specific item.

# CELEBRATING LIFE CYCLE EVENTS

*Ecclesiastes 3:1*



## May Anniversaries

May Anniversaries will be honored on May 17. To sponsor a Kiddush, contact Jill, 913-647-7286.

[Submit your Mazal Tov to be published](#)

Day		Years
1	Stephen & Ellen Katz	31
3	Matthew & Melissa Rubel	22
8	Ronald & Dierdre Baker	20
9	William & Cheryl Ginsberg	38
15	Charles Gordon & Ellen Dorshow-Gordon	37
18	Marvin & Janice Finkelston	62
18	Ronald & Andrea Goldberg	39
21	Richard & Beryl Silberg	60
23	Jeffrey & Sharon Mallin	32
23	Ian & Wendy Snitz	11
24	Michael & Staci Kahn	22
24	Nathan & Nancy Reiz	33
24	Robert & Stacie Turtledove	16
25	Edward & Gloria Feinstein	39
25	Todd & Reena Natenberg	5
26	Todd & Celine Coppaken	12
26	Peter & Sharon Loftspring	23
26	Andrea Poisner & Robert Corchine	3
26	Lee & Susan Ullman	23
27	Steven & Rosemary Nochlin	35
27	Scott & Roberta Picker	30
28	Allen & Susan Lebovitz	42
28	Jered & Corey Nussbaum	8
28	William Silverman & Ann Karty	20
29	Morton & Shirley Hurst	60
29	Jeffrey & Carol Katz	37
29	Mark & Toubie Searles	31
30	Michael & Mollie Berenbom	4
30	Joseph & Julie Zwillenberg	15
31	Robert & Cindy Daniels	33
31	Steven & Pam Gollub	6
31	Howard & Sherri Kalender	38

## Mazal Tov to...

**Herb and Alice Stein** upon the birth of their granddaughter, Kaya Rose Mahayosnand Stein. Kaya's parents are Adam Stein and Paula Mahayosnand of Jersey City, NJ. The maternal grandparent is Inpol. Kaya's sister is Isabella.

**Lou and Mika Cohn** upon the birth of twin sons. Maternal grandparents are **Mark and Ellie Mandelbaum**. The paternal grandparent is **Brad Cohn**.

**Ruth Margolies** upon the birth of her great-grandson, Hillel Avraham Goldberg. Parents are Ari and Rachel Goldberg and the grandparents are Daniel and Debra Margolies.

**Anne Bratt** on the birth of her great-grandson, Alan Jacob Bratt. Alan's parents are Jordan and Allison Bratt.

**Allison Ullman** upon receiving the Joseph Harman B'nai B'rith Lodge's Sam Yagan Family Scholarship.

### Memorial Day Shabbat

During Shabbat services on May 24, we will honor our members who have served in the U.S. Armed Forces. If you would like your name to be listed, please e-mail Natasha Olinetchouk at [natashao@bethshalomkc.org](mailto:natashao@bethshalomkc.org) or call 913-647-7281. Please provide your name and the branch of the armed forces in which you served.



## Of Blessed Memory

We express condolences to our Beth Shalom Members, their Families and Friends.

## Unveilings

*Philip Alpert, z"l*, March 27 / 25 Adar II

*Helen G. Rhodes, z"l*, April 13 / 13 Nisan

*Minnie Hauser*  
June 6 12:00 pm

*Warren S. Yukon, z"l*, April 3 / 3 Nisan

*Sam Ginsberg, z"l*, April 17 / 17 Nisan

*Edith Pinsky*  
June 6 1:30 pm

*Eugene Bileski, z"l*, April 8 / 8 Nisan

*William Kaiser, z"l*, April 24 / 24 Nisan

*Marcia Eveloff*  
June 15 11:00 am

## Yahrtzeits

Join us for morning or evening minyan to say Kaddish for your loved one. See service schedule, page 11.

### 1 Iyar - May 1

Frances Agron  
Sophie Balter  
Harry Cohn  
Jennie Gershman  
Samuel Goller  
Elka Gorodezky  
Hannah Laner  
Ruth Levi  
Rebecca Sanell  
Phillip Sloan  
Sarah Spindler  
Ike Tuzman  
Gus Unell  
Sophia Wayne

Meyer Selichonok  
Gwendolyn Snitz  
Howard Wayne

### 6 Iyar - May 6

Minnie Berg  
Anna Cohen  
Joseph Cohen  
Mike Fox  
Louis Gershman  
Joseph Gershon  
Leah Partnoy  
Martin Ross  
Morris Rubinfire  
Libby Shankman  
Hyman Strum  
Louis Yukon

### 2 Iyar - May 2

Betty Brand  
Elaine Feingold  
Morris Oliver  
Lois Rosenbloom  
Sylvia Swerdloff

### 7 Iyar - May 7

Morris Benjamin  
Martha Fishman  
Bernard Ginsberg  
Dollie Levi  
Himie Levitch  
Harris Sheskin  
Marie Singer

### 3 Iyar - May 3

Isaac Bratt  
Zalman Glatt  
Edythe Goldberg  
Goldie Goodman  
Nina Kahn  
Beverly Mann  
Bertha Milgram  
Wolf Singmon  
Bessie Spivak  
Miriam Studna

### 8 Iyar - May 8

Morris Baellow  
Henry Baum  
Merle Galitzky  
Alkano Katz  
Paul Peltzman  
Phil Silverman

### 4 Iyar - May 4

Leah Bronstein  
Louis Dworkowitz  
Sophia Eisberg  
Rosalie Loeb  
Anna Quito  
Samuel Rubinfire

### 9 Iyar - May 9

Leah Byarsky  
Margaret Davis  
Meyer Eckstein  
Arnold Feinberg  
Margaret Fisher  
Ruby Geller  
JoAnne Hollub  
Joseph Krantz  
Sarah Rogell  
Esther Rosenberg  
William Ruback  
Morris Shankman  
Alex Stolov

### 5 Iyar - May 5

Sophie Berkowitz  
Pearle Bramson  
Issy Crosner  
Shalom Finkelstein  
Benjamin Goodman  
Bernard Hurwitz  
Esther Jacobson  
Frank Josephson  
Sam Klein  
David Krashin  
Anne Reichman  
David Schwartz

### 10 Iyar - May 10

Esther Brockman  
Margaret Devins  
Fanny Fredman  
Harold Glazer  
Abe Herzmark  
Jack Kur

Abraham Noah  
Rebecca Rolsky  
Philip Sandler  
Chanah Schoop  
Florence Schuman

### 11 Iyar - May 11

Reuben Brenner  
Issy Eisman  
Shifra Gaba  
Ben Gorman  
Anna Kohn  
Harry Kopec  
Rachel Saver  
Harry Shultz  
Morris Yaskolka

### 12 Iyar - May 12

Chayah Bernstein  
Moses Bernstein  
Mollie Burnstein  
Marsha Carr  
Louis Fox  
Ida Hakan  
Elliot Lerner  
Rebecca Lieberman  
Frances Malcy  
Solomon Naron  
David Peneer  
Lena Present  
Hermann Rosenberg  
Harry Silverman

### 13 Iyar - May 13

Isaac Baellow  
Abe Bain  
Bernice Baum  
Basheh Grollman  
Kelly Kavanaugh  
Max Keller  
Sophie Kleiman  
Robert Krigel  
Ruth Levitch  
Carl Lipoff  
Irving Mallin  
Richard Mour  
Jacob Polokoff  
Philip Rubin  
Max Zurovsky

### 14 Iyar - May 14

Joseph Gaba  
Jerome Gordon  
Israel Krasne  
Barney Lessum  
Jeannette Marks

Fannie Rosenbloom  
Esther Sosland  
Anna Tepper

### 15 Iyar - May 15

Isaac Bornstein  
Louis Friedman  
Bertha Gladstone  
Don Glassman  
Esreal Gorman  
Samuel Greenberg  
Samuel Greenstein  
Leon Karosen  
Reba Klutz  
Nessie Kosovitz  
Alice Lapin  
Phillip Millstein  
Sarah Poizner  
Anna Rabenawitz  
Edith Rose  
Henry Rosenberg  
Theresa Shear  
Louis Shopmaker  
Joseph Silverforb  
Martin Silverman

### 16 Iyar - May 16

Anna Azorsky  
Nathan Bell  
Bertha Feingold  
Louis Gelhaar  
Joyce Greenbaum  
Gladys Kahn  
Lewis Kaufman  
Albert Levy  
Abe Morris  
Samuel Raffelock  
Lula Sedler  
Nathan Wedlan  
Samuel Werby  
Mirion Jo Zwillenberg

### 17 Iyar - May 17

Hyman Bayles  
Eli Brown  
Violet Burstein  
Herman Chemel  
Morris Gordon  
Edna Kowalsky  
Ben Levinson  
Harry Lewis  
Jake Millstein  
Minnie Pressman  
Meyer Rose  
Anna Schwartz  
Marvin Yarmo

### 18 Iyar - May 18

Abe Bertman  
Arnold Frohlichman  
Rose Herzmark  
Isaac Hoffman  
Abe Keller  
Isaac Kosovitz  
Fanny Pesman  
Isadore Rosenberg  
Eric Small  
Bessie Sokolov  
Bena Winnick

### 19 Iyar - May 19

Marcus Brand  
Joseph Cohn  
Joseph Feinberg  
Natalie Frost  
Elaine Gordon  
Herman Hurst  
Jacob Hurwich  
Sol Katzman  
Jacob Klein  
Yente Lessum  
Louis Levinson  
Minnie Parelman  
Samuel Sandhaus  
Pearl Terte

### 20 Iyar - May 20

Helen Bobrecker  
Moe Eichenberg  
Leo Feld  
Janice Imber  
Mollie Indin  
Selma Laner  
Juliana Scott  
Etta Silberg  
Israel Yodler

### 21 Iyar - May 21

Ella Glazer  
Anna Goldansky  
Dora Harris  
Solomon Kohn  
Sidney Kort  
Ben Lesky  
Elizabeth Rubin  
Harriett Schrader

### 22 Iyar - May 22

Bessie Berlin  
Jack Dagerman  
Edith Kohn  
Sam Lewin  
Celia Pack

Anschel Schnider

### 23 Iyar - May 23

Samuel Bobrecker  
Hilda Epstein  
Leona Goldfinger  
Celia Kort  
Ida Lerner  
Bessie Litwin  
Louis Myers  
Bennie Ossep  
Leo Shalinsky  
James Sherman  
Lilly Sherry  
Max Supofsky  
Hinda Winnick

### 24 Iyar - May 24

Leib Berlau  
Reva Cohen  
Sarah Funk  
Esther Horovitz  
Sanford Klutz  
Yudell Luke  
Israel Moskowitz  
Leo Tivin  
Max Topf

### 25 Iyar - May 25

Abraham Allis  
Abraham Blender  
Hannah Friedson  
Harry Greenberg  
Eugene Hauser  
Harold Lehr  
Annie Lieberman  
Abraham Puritz  
Rose Unell

### 26 Iyar - May 26

Sam Bordman  
Hayman Copelman  
Nathaniel Denebeim  
Samuel Gross  
Arelene Jacobs  
Abe Koffman  
Doris Posner  
Melvin Raskin  
Nathan Sandler  
Max Weiner

### 27 Iyar - May 27

Sadie Alpern  
Joseph Brand  
Dorothy Byer  
Dan Fingersh

Sally Glass  
Etta Harris  
Bessie Lipsky  
Meyer Shanberg  
Esther Simon  
Fannie Stolov  
Gary Tabolsky

### 28 Iyar - May 28

Gene Fink  
Esther Frischer  
Frieda Hans  
Florence Jacobson  
Ike Katz  
Miriam Lumian  
Pearl Schaffer  
Jack Schultz  
Fanny Waxman

### 29 Iyar - May 29

Gus Agron  
Hesse Berlau  
Ann Dunn  
Ben Gershman  
Fannie Nemitoff  
Roselie Noah  
Sarah Pateck  
Esther Rosenblatt  
Mamie Trochtenberg  
Joseph Webber

### 1 Sivan - May 30

Betty Agron  
Sam Glazer  
Bernard Hoffman  
Meyer Klein  
Nathan Levine  
Rosa Ohren  
Willard Small  
Katie Wilk  
Mayer Winnick

### 2 Sivan - May 31

Anna Goodman  
Victor Katz  
Al Klugman  
John Kraft  
Rebecca Krieger  
Jennie Lazarus  
Zaharia Levy  
Thomas Rogovein  
Norbert Sender  
Samuel Silverforb  
Rose Weinberg





## Arthur Brand Leadership Fund

*In Memory of*  
Arthur Brand  
Jennie Brown  
Betty Brand

## Benjamin Ryweck Torah Fund

*In Honor of*  
Birth of Alan Jacob Bratt  
Dolores Sosnow  
Joan March's 82nd BD  
Susan March  
Rachel & Emma Salle  
Janet Price's Speedy Recovery  
Judy Weinstein's Speedy Recovery  
Bessie Lipsky  
Shirley Gottstein  
Rachel Salle's 21st BD  
Joan March

## Beth Shalom Chesed Committee Fund

*In Memory of*  
Mollie Burnstein  
David & Rosalyn Burnstein

## Beth Shalom General Fund

*In Appreciation of*  
Mike Abrams  
Rabbi David Glickman  
Lawrence Sturm  
*In Honor of*  
Alina Bell's Bat Mitzvah  
Dave & Judy Jacobs  
Birth of Alan Jacob Bratt  
Earl & Shirley Unell  
Alan Edelman's BD  
Debbie Sosland-Edelman's BD  
Maxine Frank  
Jack Sokolov's 99th BD  
Jerry & Susan Klopfer  
*In Memory of*  
Anna L. Cohn  
Sanford Cohn  
Abe Bain  
Jerry & Alegria Bain  
N. Baraban  
Diane More  
Moshe Berger  
David & Karen Berger  
Paul Berman  
Michael & Alexa Berman  
Leo Bershtein

Yuly Khalemsky  
Samuel Bornstein  
Ahna McCracken  
R. Robert Cohn  
Sanford Cohn  
Gilbert Dulsky  
Steve & Susan Hammer  
Sherman Forman  
Sarah Forman  
Jack Forman  
Martin Goldberg  
Ed & Cheryl Alexander  
Frank & Sondra Friedman  
Daniel & Ann Harris  
Esther Himmelstein  
Ruth Byers  
JoAnne Hollub  
Howard & Lynda Hirsekorn  
Clara Kahn  
Lee Ann Saltzman  
Dr. Bela Kent  
George Kent  
Rudolph & Dorothy Leibowitz  
Valerie Freed  
Phillip Magazine  
Marian Hermanson  
Harold Margolin  
Lynn Gordon  
Sam & Jean Price  
Robert Boxer  
Etta Price  
Nathan Price  
Michael & Myra Matters  
Joseph William Pucker  
Sharon Pucker Rivo  
Gertrude Rabinowitz  
Gerry & Anne Rabin  
Mel Raskin  
Sandi Raskin  
Pauline Remis  
Louis & Marilyn Kessler  
Mirah Rostov  
Judy Weitzman  
Moses Rubin  
Melyvn & Frances Beiman  
Arnold Schoolman, M.D.  
Barbara Schulman  
Anna Shaoul  
Sam Shaoul  
Mark Brian Sher  
Gloria Sher  
Sylvia Minkin  
Shopmaker  
Nancy Morais  
David Spector  
Harold & Natalie Klopfer  
Martha Stern  
Stanley Stern  
Anna Sutin  
Joan Martin

**Beth Shalom Lechem Fund**  
*In Honor of*  
Marna Dolginoff's

**85th BD**  
Bernie & Ella Ullman  
Carol Goldstein's BD  
Stan & Marlene Katz  
60th ANN  
Sarah Small  
*In Memory of*  
Arthur Chapman  
Alan & Tina Chapman  
Nancy Kargman  
Martin Goldberg  
Gary & Patti Friedman

## Beverly & Harvey Bodker Endowment Fund

*In Honor of*  
Steve & Diane Azorsky's 25th ANN  
Stan & Marlene Katz  
60th ANN  
Harvey Bodker

## Cemetery Maintenance Fund

*In Memory of*  
Leo Blonsky  
Marilyn Blonsky  
Ethel Cohn  
Clifford Cohn  
Harold Covitz  
Randy & Joan Covitz  
Phillip Geller  
Randy & Joan Covitz  
Frances Gross  
Robert Bettinger  
Doris Lichter Flam  
Drew Levine  
Jeffrey Levine & Reed Fletcher  
Theodore Silverman  
Harry & Hedra Merson

## Early Childhood 20th ANN Event

*In Honor of*  
Judy Jacks Berman & RFECEC Staff  
Roberta Pollack Goller & Sam Goller  
Hanan & Natalie Hammer  
Esther Rudnick

## Gale & Maxine Grossman Religious School Fund

*In Honor of*  
Jack Sokolov's 99th BD  
Maxine Grossman

## George & Esther Nowick Scholarship Fund

*In Memory of*  
Willy Nowick

Manuel Nowick  
Shelly & Stevie Pessin

## George B & Marian Durbin Prayer Book Fund

*In Honor of*  
Stanley & Marlene Katz's 60th ANN  
Jeff & Carol Katz  
Goldstein  
*In Memory of*  
Harriett Schrader  
Jeff & Carol Katz  
Jack Wolf  
Ted & Jill Goldstein

## Harry & Anita Daniels Camp Ramah Scholarship Fund

*In Memory of*  
Lois Rosenbloom  
Anita Daniels

## Helen Rae & Sydney Cerier Teacher Development Fund

*In Memory of*  
Shirley Gerson  
Helen Rae Cerier

## Jacob H & Rose Levine Teacher Development Fund

*In Honor of*  
Bev Newman's BD  
Marvin & Adelle Goldstein  
Charlotte & Bill Kessler  
*In Memory of*  
Jack Wolf  
Peter & Beverly Newman

## Judaica & Art Fund

*In Honor of*  
Birth of Alan Jacob Bratt  
Joan March's BD  
Bob & Aletha Simon

## Karbank Family Fund

*In Memory of*  
Rose Karbank  
Joseph Smuckler & Marcia Karbank  
Mark & Diane

## Davidner Kiddush Fund

*In Honor of*  
Birth of Alan Jacob Bratt  
Stan & Marlene Katz's 60th ANN  
Bernie & Ella Ullman's 51st ANN  
Joe & Fran Wolf's 51st ANN  
Rhea Salasche & Harold Kaseff  
*In Memory of*  
Debra Abel  
Scott & Debra Goldstein  
Dorothy Geller  
Randy & Joan Covitz  
Manuel Kaseff  
Harold Kaseff

## Mallin Childhood Enrichment Fund

*In Honor of*  
Isadore Rosenberg  
Larry & Beverly Mallin  
*In Memory of*  
Morris Dobrowski  
Jeff & Sharon Mallin  
Esther Rosenberg  
Ruth Rosenberg  
Larry & Beverly Mallin

## Polsky Religious School Fund

*In Memory of*  
Carl Schwartz  
Irwin & Carolyn Cohen

## Rabbi Glickman's Discretionary Fund

*In Appreciation of*  
Rabbi David Glickman  
Joseph Smuckler & Marcia Karbank

*In Honor of*  
Bev Newman's BD  
Rod & Gerre Minkin

*In Memory of*  
Martin Goldberg  
Mike & Renana Abrams  
Marvin Szneler  
Sol Katzman  
Mike Katzman  
Jacob Rosenfeld  
Jerry & Barbara Cosner

## Rabbi Morris Margolies Adult Education Fund

*In Honor of*  
Birth of Hillel Avraham Goldberg  
Marvin & Carol Goldstein

## Reuben Brenner Chapel Maintenance Fund

*In Honor of*  
Jack Miller's 90th BD  
Bernard & Judy Rosenberg  
*In Memory of*  
William Sosnow  
Bernard & Judy Rosenberg  
Dolores Sosnow

## Romotsky, Price, Cortés Genetic Testing Fund

*In Memory of*  
Joshua Price  
Harold & Janet Price

## Rosalie Siegel Mezzuzah Fund

*In Honor of*  
Marvin & Evelyn Gibian's 65th ANN  
Bernard & Judy Rosenberg

## Rose & Sol Stology Fund

*In Memory of*  
Shirley Goller  
Ben Lesky  
Harry Stolov  
Mike & Laurel Rogovain

## Rose Evelyn Sporn Primary Fund

*In Memory of*  
Ben Kaufman  
Bessie Rosengarten  
Sherrie Hunninghake  
Inez Kaufman

## Rose Family Early Childhood Education Center

*In Memory of*  
Betty Agron  
Jack Forman  
Martin Goldberg  
Jonathan & Ellen Chilton  
Joseph Smuckler & Marcia Karbank  
Miles & Sally Ross

## Rose S Levine & Doris L Flam Arts &

## Education Fund

*In Honor of*  
Marna Dolginoff's 85th BD  
Estelle Berman

## Sanford Dunn Merit Scholarship Fund For Study

*In Honor of*  
Janet Price's Speedy Recovery  
Patsy Shanberg

## Shirley S & Albert I Goller Camp Ramah Scholarship

*In Memory of*  
Shirley Goller  
Izzy & Jeanne Bloomberg

## Sidney Ginsburg Endowment Fund

*In Honor of*  
Stan & Marlene Katz's 60th ANN  
Larry & Ellen Polsky

## Stein Family Youth Fund

*In Memory of*  
Martin Goldberg  
Stewart & Esther Stein  
Dora Viscofsky  
Elizabeth Bohm

## Sylvan Siegler Scholarship Fund for Jewish Camping

*In Memory of*  
David Singer  
Merna Siegler

## Tommy & Bert Rogovain Memorial Fund

*In Memory of*  
Tom Rogovain  
David Schwartz  
Mike & Laurel Rogovain

# Community

## Annual Community-Wide All Night Shavuot Program:

The Jewish community will join for prayer, study and celebration at the annual all-night Shavuot program on Tuesday, June 3, at Kehilath Israel Synagogue, 10501 Conser. Two Minchah services, traditional and egalitarian, begin at 8:15 pm. The keynote speaker is Rabbi Tovia Singer. His topic: "The Battle of the Jewish Soul! Are the Missionaries Winning?" Rabbi Singer is the founder and director of Outreach Judaism, an organization which counters the efforts of fundamentalist Christian groups who specifically target Jews for conversion. He addresses more than 100 audiences a year. His book is titled "Let's Get Biblical: Why Doesn't Judaism Accept the Christian Messiah?"

Responding to Rabbi Singer's keynote will be Rabbis Daniel Rockoff, David Glickman and Doug Alpert, with moderator Rabbi Mark Levin. Study sessions will be led by Rabbi Singer and Rabbis David Glickman, Rebecca Reice and Beryl Padorr. Sunrise services and breakfast will conclude the celebration.

Stay for a few hours or remain until dawn for study opportunities throughout the night. Snacks and coffee will be available, and a dairy buffet dinner will be served at 9:10 p.m. Cost is \$15.00 per adult and \$10.00 for students.

Make advance reservations online at [kcrabbis.org](http://kcrabbis.org) or send checks payable to Rabbinical Association to Rabbinical Association, 5801 W. 115, Suite 113, Overland Park, KS 66211. Reservation deadline is May 28; reservations received after May 28 are \$18.00.

There is no charge to attend study programs only, which begin at 10:15 pm. Youth programs are available for 6th-8th graders and 9th-12th graders. Check [kcrabbis.org](http://kcrabbis.org) for details.

This program is cosponsored by The Rabbinical Association of Greater KC and area congregations and funded by the Frank Morgan Fund of Kehilath Israel Synagogue. For additional information, contact Annette Fish, Administrator/Program Director, Rabbinical Association, [afprogram@aol.com](mailto:afprogram@aol.com) or 913-327-4622 or visit [kcrabbis.org](http://kcrabbis.org).

Boy Scout Troop 61 Members helped Jacob Flekier create a picnic area near the Beth Shalom youth lounge. This was Jacob's Eagle Scout project.



*Pictured in the Front Row (Left to Right): Abby Flekier, Milisa Flekier, Jacob Flekier, Sam Sokolov, Bradon Davis and Asa Abrahamson  
Back Row (Left to Right): Andrew Flekier, Jacob Melookaran, Josh Hurst, Nicole Abrahamson, Bruce Winston, Ryan Hakim, Jeff Abbas and Ben Abbas.*

## Special Kiddush Luncheon

Richard and Beryl Silberg will be sponsoring the Kiddush luncheon on Shabbat, May 31 in honor of their 60th Wedding Anniversary. They were married May 21, 1954 by Beryl's father at Emanuel Synagogue in Oklahoma City. Richard served in the army as a medical officer and a paratrooper in the 11th Airborne division during the Korean conflict and they lived at Fort Cambell, Kentucky where he was stationed. After the war they moved to Kansas City. They are the parents of two children: daughter Karla (deceased) and son Gregg (who is married to Corinna). They are regulars at Shabbat morning services. Richard serves on the Chesed Committee. Beryl serves on the Ritual Committee and is a Gabbai and a Torah reader.

## My Mother's Family Recipe for Pancakes

### Ingredients

1 egg  
1 1/4 cup buttermilk  
1 cup flour  
1 tsp baking powder  
1 scant tsp baking soda  
1 Tbs sugar  
1/4 tsp salt

### Instructions

1. Mix ingredients together.
2. Melt butter in a frying pan.
3. Drop the mixture in the pan by the spoonful to make pancakes.
4. Fry to a golden color on both sides.

Cooking  
With  
Cathy

Congregational-Wide Events - See each department for their activities

Sunday	Monday	Tuesday	Wednesday	Thursday	Friday	Saturday
				Scroll Deadline <b>1</b> Peltzman Class 1 Iyar	<b>2</b> 12th Grade Baccalaureate Dinner 7:56 Shabbat Shalom 2 Iyar	<b>3</b> 8:56 Havdalah Shavu'ah Tov! 3 Iyar
 <b>4</b> Steppin Out 4 Iyar	<b>5</b> Yom Hazikaron  5 Iyar	<b>6</b> Yom Ha'atzmaut  6 Iyar	<b>7</b> SH Board Meeting KCUSY Wednesday Night Program 7 Iyar	<b>8</b> Peltzman Class 8 Iyar	<b>9</b> KCUSY Youth Shabbat & Installation Dinner 8:02 Shabbat Shalom 9 Iyar	<b>10</b> Bat Mitzvah Sophie Zinman SH Trial of King David 9:02 Havdalah Shavu'ah Tov! 10 Iyar
 <b>11</b> Mother's Day 11 Iyar	<b>12</b> Board of Directors Meeting 12 Iyar	<b>13</b> Sisterhood Safe Home 13 Iyar	<b>14</b> Warm Up America! 2015 Confirmation Class Meeting 14 Iyar	<b>15</b> PreK Trip to Sea Life 15 Iyar	<b>16</b> 8:09 Shabbat Shalom 16 Iyar	<b>17</b> Planned Givers Honored Anniversary Shabbat 9:09 Havdalah Shavu'ah Tov! 17 Iyar
 <b>18</b> 18 Iyar	<b>19</b> 19 Iyar	<b>20</b> 20 Iyar	<b>21</b> Downtown Talmud Jam 21 Iyar	 <b>22</b> 22 Iyar	<b>23</b> RFEC End of the Year Picnic 8:15 Shabbat Shalom 23 Iyar	<b>24</b> Bar Mitzvah Noah Davis Memorial Day Recognition during Services 9:15 Havdalah Shavu'ah Tov! 24 Iyar
<b>25</b> 25 Iyar	<b>26</b> Memorial Day Offices closed. 26 Iyar	 <b>27</b> 27 Iyar	<b>28</b> PrayerWorks 28 Iyar	<b>29</b> 29 Iyar	<b>30</b> 8:20 Shabbat Shalom 1 Sivan	<b>31</b> 9:20 Havdalah Shavu'ah Tov! 2 Sivan

## Candle Lighting Blessing

ברוך אתה ה' אלקינו מלך העולם אשר קדשנו במצותיו וצננו להדליק נר של שבת.

Barukh ata Adonai Eloheinu melekh ha'olam, asher kiddeshanu b'mitzvotav vetzivanu lehadlik ner shel Shabbat.

## May Service Schedule

### Weekdays

Village Shalom

Minchah:

Sunday-Thursday  
6 pm

Shacharit:

Monday-Friday  
7 am

### Shabbat CBS

Kabbalat Shabbat: **Friday 6:00 pm**

Main Service: **Saturday 9:30 am**

Library Minyan: **Saturday 9:30 am**

Minchah: **Saturday Varies**

Minchah: **May 10 7:00 pm**

Minchah: **May 17 8:09 pm**

Minchah: **May 24 8:15 pm**

Minchah: **May 30 8:20 pm**

Shacharit: **Sunday 8:30 am**

## Grandparent Special Person Day



Left to right back row: Alexis Schwartz, Eddie and Ellen Rose. Front row: Judy Sherry, Gabe Sherry, Jake Schwartz, Zach Blinn and Steve Sherry.

Shabbat Services and Sunday morning Shacharit will be held at CBS, 14200 Lamar. Weekday Minyan will be held at Appleman Synagogue, Village Shalom, 5500 W. 123rd St.



**Congregation Beth Shalom**  
 14200 Lamar • Overland Park, KS 66223  
[www.bethshalomkc.org](http://www.bethshalomkc.org)  
 Office: 913-647-7279 • Fax: 913-647-7277

CONGREGATION  
**Beth Shalom**

David M. Glickman, *Senior Rabbi*  
 Hazzan Tahl Ben-Yehuda,  
*Director of Congregational Learning*  
 Elaine Levine, *Executive Director*  
 Alan L. Cohen, *Rabbi Emeritus*  
 Judy Jacks Berman, *Director, RFEC*  
 Michael Abrams, *President*  
 Bev Newman, *Scroll Editor*  
 Dahlia Berger, *Scroll Design*

The Congregation Beth Shalom Scroll (USPS531-420) is published monthly by Congregation Beth Shalom, 14200 Lamar Ave., Overland Park, KS 66223. Annual Subscription \$24.00. Periodical Postage Paid in Shawnee Mission, KS. **DATED MATERIAL**

**POSTMASTER:** Send address changes to CONGREGATION BETH SHALOM SCROLL, 14200 Lamar, Overland Park, KS 66223. Scroll Deadline: The 1st of the previous month. Submit articles to the Administrative office before the deadline.

*Congregation Beth Shalom, an egalitarian Conservative synagogue, is a welcoming community of individuals from diverse backgrounds, strengthening connections with God, Torah and the Jewish people through communal commitment to prayer, study and acts of loving kindness.*

**Looking Ahead:**

**Scroll Deadline:**  
**June 2 for July**

**Shavuot**  
**June 3-5**

**Congregational Celebration**  
**Installation Brunch June 22**

**Office Hours:**  
**Monday - Thursday** 8:30 am-5 pm  
**Friday** 8:30 am-3 pm  
*Closed on Federal Holidays*

**Mt. Carmel Cemetery Hours:**  
**Monday, Wednesday** 8 am-4 pm  
**Tuesday, Thursday** Closed  
**Saturday** Closed  
**Friday & Sunday** 8 am-4 pm  
**National Holidays** 9 am-4 pm  
*Exceptions: Thanksgiving, New Year's Day & Christmas Day*  
**Jewish Holidays** Closed  
**Phone: 816-361-4495**

**Sisterhood Gift Shop Hours:**  
**Hours:**  
**Sunday** 10 am-noon  
**Mon., Tues., Thurs.:** 10 am-2:30 pm  
**Wed.** 10 am-6 pm  
**Friday** 10 am-noon  
**913-647-7298**

**RFECCEC Grandparent's / Special Person Day**



Mia Feldman and Sydney Feldman



Bella Kroll with Marcia Karbank and Joe Smuckler



Brad Jerwick and Ella Jerwick