



Hanan Hammer, Recipient of the 2015 Kovod Award

Hanan Hammer has been named the 2015 Kovod Award recipient, and will be honored at Volunteer Shabbat on January 9. The Kovod Award, initiated by the

Men's Club in 1944, was established to "honor an individual or individuals, who have provided exceptional service to Congregation Beth Shalom".

Hanan first became active in synagogue leadership as a member of the School Committee in the late 1970's. He has served as Budget Chair 6 or 7 terms and Chair of Administrative Committee (3 terms) and Scholarship Committee (2 terms). Also, he has served on the following committees: several Executive Search Committees and Religious School Director Search Committee. For over 10 years Hanan has worked closely with the Early Childhood Program in budget matters. Hanan has recently become a member of the Kiddush Corps and is truly enjoying helping to make our Shabbatot very special.

Hanan, a third generation member of CBS, and his wife, Natalie, attended our religious school, were married at our synagogue and celebrated their 47th anniversary this year. They are the proud parents of two daughters, Rachel (Ben Warner) and Debra (Peter Katai), and four grandchildren, Lucy, Mason, Lindsay and Zach.

Asked why he was so involved with CBS for so many years, Hanan's response was Beth Shalom created a volunteer position in the office for his late mother, Serena Hammer, after his father passed away and her retirement. This volunteer position lasted for over 10 years and made her feel part of the CBS family. The synagogue members became her extended family, as it has for Hanan and Natalie. "What finer example can I set for my children and grandchildren?" Hanan asked. But Hanan also said that in a very selfish way, "It is so fulfilling in my life."



Victor Wishna, Recipient of the Arthur Brand Leadership Award

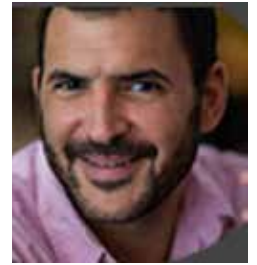
This year's Arthur Brand Leadership Award Winner, Victor Wishna, has been an active member of Congregation Beth Shalom since childhood, and was president of both Kadima and KCUSY. He is a frequent Torah reader on Shabbat morning, and serves as a b'nai mitzvah tutor. Currently serving as a member of the CBS Board of Directors, Victor used his award to attend the United Synagogue of Conservative Judaism's Biennial Convention in Schaumburg, Illinois in November.

Victor is an award-winning writer, author, playwright and commentator as well as being a stand-up comic. In 2010 he was named New York's second funniest amateur Jewish comedian by the *Jewish Weekly*. Victor graduated from Stanford University and the New School's creative writing MFA program. He is also a regular commentator on NPR affiliate KCUR. He contributes a weekly real estate feature to the *New York Post*, and serves as a national correspondent for the Jewish Telegraphic Agency. While in New York he served as a special aide to Chancellor Arnold Eisen at the Jewish Theological

Seminary, where he assisted with researching, editing and writing of official speeches and publications.

Victor is married to Annie (Berenbom) Wishna, who is an ophthalmologist in Johnson County. They have two young children, Vivien and Abraham, who attend the Rose Family Early Childhood Education Center.

The Arthur Brand Leadership Award was established in 1999 to honor the memory of Arthur Brand, past president of CBS, who served many other roles in both CBS and the Jewish community. The award was conceived to recognize and develop new and emerging CBS leaders. It will be officially presented to Victor at Volunteer Shabbat on January 9.



From the Rabbi's Study

The Need for Radical Moderates



As a religious and political centrist, I often find myself feeling lonely. Extremists make much more news than moderates, and their rhetoric is louder. Maimonides, the

11th-12th Century Jewish philosopher and jurist, says that the ideal state is to walk on the "middle path" - not straying too far to one side or another.

It is easy to look at the radical Islamists who have caused so much bloodshed through terrorism, and to place blame on the spread of extremism in the Moslem community for not speaking up.

It is harder to look at the radical fringes of our own communities because they have not caused the same

type of violent terror. However, I feel that there is also a need for moderates to publicly refute extreme views in their own camps.

To refute Trump and his anti-Moslem and anti-immigrant hate-filled vitriol, I believe the challenge needs to come from the entire Republican Party saying loudly and clearly that this rhetoric is not representative of being a Republican. It is obvious that the political left is opposed to Trump - but the political center-right has the opportunity to have an impact.

In liberal Jewish and liberal secular circles, a similar type of refutation of the Boycott, Divestment and Sanctions movement which tries to ostracize Israel must take place. It is

obvious that the political right, and the Jewish right are opposed to BDS. What is harder (but ultimately more effective) is for the center-left to vociferously refute the BDS movement.

BDS and Trump are using very similar rhetoric. Both are saying that because of opposition to a subgroup, they are maligning the entire group with hate.

I doubt you will see armies of protestors parading down the street for moderation, but if we don't see the radicalization of moderates, it is tacit approval of extremism.

David M. Glickman

Rabbi David M. Glickman
dglickman@bethshalomkc.org



Men's Club Participating In World Wide Wrap

Men's Club will be participating in the World Wide Wrap on Sunday, February 7 at 9:30 am in Goldsmith Hall. Here is your chance to learn to wear Tefillin. A teaching session covering the art of wearing Tefillin will be held. This opportunity is open to everyone of all ages - men, women, boys and girls.



Downtown Talmud Jam

Downtown Talmud Jam will meet on January 13. The class, facilitated by Rabbi Glickman, will meet from 12:00 - 1:00 pm, at the offices of Lathrop and Gage. Future classes will meet on February 10, March 9, April 13 and May 11.

For more information or to RSVP, contact the CBS office at 913-647-7281.

Parashat Hashavua Group

Parashat Hashavua is an ongoing, monthly program that takes place on every third Shabbat of the month at 9 am in the Board Room. The goal of this program is to engage its participants in a stimulating discussion of the weekly Torah portion in a friendly atmosphere, where the difference of opinions is respected, and questions



are encouraged. The participants enjoy the deep level of discussion and Kabbalistic insights into the text. The next session will take place on January 16, when Parashat *Bo* will be discussed. Everyone is welcome.

For more information contact Svetlana Sorokin at 913-393-1715 or saraliorasedu@hotmail.com.

Executively Speaking

Thank You Congregants



We all deserve thanks and congratulations for supporting and engaging so well in the success of our kehillah, our sacred community. Let me share with you some really good news.

CBS's membership is up – we now have 695 family units, compared with 687 as recently as Rosh HaShanah. Enrollment in the Rose Family Early Childhood Education Center is up – we budgeted for 60 children and now have 79 enrolled. Active engagement in our congregation is up – our first “Committee Jam” on Nov. 8 was a success, with many congregants newly volunteering to serve on committees or in activities.

More good news – we contribute generously to support the activities in the three areas we most care about: prayer and spirituality, congregational learning, and engagement in our communities. For the second year in a row, we exceeded our budgeted amount in High Holiday pledges. Thirty-seven families who have never contributed before did so this year, as did 100% of our Board members.

Over 100 people participated in our annual fundraiser, Denim and Diamonds. This very successful event is the third of three sources of income from our congregants. We benefit from the commitment of 69 Pillars this year, contrasted with 63 a year ago. Pillars constitute half of our

congregation's dues, despite being only 10% of the families.

More good financial news - Beth Shalom's Mt. Carmel Cemetery Fund was one of seven recipients of a generous gift and will receive 10% of this important legacy gift to support our cemetery in perpetuity. And I am happy to report that Beth Shalom's mortgage has been steadily shrinking since the sale of our Wornall campus, and is now below \$800,000 for the first time since we built our Lamar campus.

As we start a new calendar year, let us thank ourselves and each other for our mutual commitment to supporting our kehillah. Have a great year.

Norman Kahn, Jr.
President

nkahnmd@gmail.com

From the Desk of the Director of Congregational Learning

Hazzan Tahl Ben-Yehuda, Director of Congregational Learning | hazzantby@bethshalomkc.org

A Meaningful January



January is famous for cold, blustery weather, and for short, dark days. The holidays are behind us, and the rest of “just winter” looms. What

is there to look forward to? What is there to make us feel good after nearly two months of indulgence; celebrations, gifts, food, travel perhaps...

January is actually a very special time. The cold weather and the possibly pinched wallets after all the holiday spending provide us with the impetus to sit quietly, breathe deeply, and consider the values in our own lives and the lives of those around us. It is the perfect time not to make resolutions about ourselves, but to make

resolutions about how we will be in relation to those around us – within our local Jewish community, within the broader local community, and globally.

In mid-January, we commemorate the life and work of Reverend Dr. Martin Luther King, Jr. I will be participating in a service to commemorate his life and work at Rockhurst University on January 10. I will be singing one song with other Jewish song leaders in the KC Jewish community called “Holy Ground”. The message of this song, written by Craig Taubman, is everywhere we are - in loving, in singing, in bitter moments as well as sweet moments - everywhere we are is holy. Every person we

encounter is holy. Every moment we experience can be holy. What does it mean to be holy? When something is holy, it is set apart from the ordinary - it's special and set apart for God. The message of this song is one aspect of the message of Dr. King - In God's eyes, each of us is holy, and each of us is required to treat others with the respect and care of someone who is beloved by God.

May this month be one where we turn from self-indulgence, self-worry and our own needs, to worry and care for those around us. My prayer for all of us is that we make the time to turn our energies outward this month and we make a habit of caring for others.

Sisterhood

Berenice Haberman, President | shpres@bethshalomkc.org |

SH Celebrates it's 92nd Birthday

Sisterhood invites the entire congregation to join us in commemorating our 92nd Birthday on Shabbat morning, January 23 at Sisterhood Shabbat. Sisterhood, the oldest auxiliary organization of our congregation, was founded in 1924, and the first sisterhood president was Sarah Peltzman.

We will be honored to have a special guest speaker, visiting University of Kansas Assistant Professor of Jewish Studies, Eric Lee Welch. His talk is entitled: "A Future in the Past: The KU Jewish Studies Program's New Archaeological Work in Israel". Dr. Welch's primary interests are in the area of reconstruction of Near Eastern history using text and archaeology. His research focuses on the Kingdom of Judah in the 8th -6th Centuries BCE. This past summer he was part of an archaeological team that discovered the entrance gate and fortification wall of the ancient biblical city of Gath. Members of the Sisterhood will be leading Services, and a specially prepared Kiddush luncheon will be served.

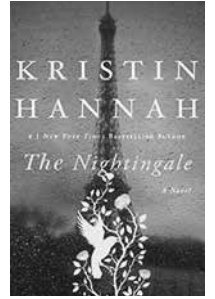


Planning for Sisterhood Shabbat

Pictured from Left to Right: Phyllis Abrams, Shira Wajcman, Berenice Haberman & Laurel Rogovain. Not Pictured is Joanie Kort.

Book Club Meets on February 10

Sisterhood Book Club will meet on Wednesday, February 10 at 1:30 pm at the home of Barbie Glass. (Note the afternoon time because of winter.) We will be discussing *The Nightingale* by Kristen Hannah.



The story takes place in France at the beginning of World War II and brings us the story of two sisters, Isabelle and Vianne, who fight the Nazis in different ways. This novel is an epic love story and family drama celebrating the flexibility of the human spirit and the strength of women.

For more details or to attend, contact Linda Lessner at 913-897-0122 or at lessner@kc.rr.com.

Rose Family Early Childhood Education Center

Judy Jacks Berman, Director | jjb@bethshalomkc.org | 913-647-7287



Winter Family Fun

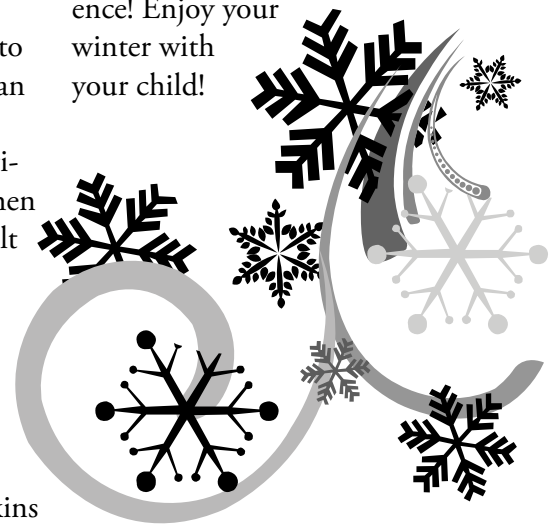
January is a great month to curl up and enjoy family time!

- Have a pajama party and watch movies, eating favorite treats.
- Family cooks dinner together.
- Let each member of the family choose a Shabbat guest and make the menu and have a special Shabbat dinner with friends.
- Have an indoor snow ball fight with Jumbo Cotton Balls.
- Make a fort with a blanket over a card table.
- Get a giant refrigerator box and let the kids decorate it as a hiding place,

bringing in pillows and books and toys.

- Give your child shaving cream to use on the tiles in the bath tub for an artistic bath time!
- Make colored ice cubes with primary colors of food coloring and then watch what happens when they melt and blend colors.
- Go to an indoor swimming pool.
- Go to trampoline parks.
- Take a trip to Wonderscope.
- Visit the Kemper Museum of Contemporary Art and Nelson-Atkins

Museum of Art for a great art experience! Enjoy your winter with your child!



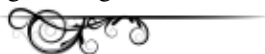
Youth & Informal Education

Stefanie Williams, Director | swilliams@bethshalomkc.org | 913-647-7292

November Kinnus

Adena Goldberg, Gabrielle Abrams, Emma Shapiro and Abby Flekier share their impression of the November USY Kinnus: Over Thanksgiving break KCUSYers traveled to St. Louis for the annual Kinnus, fall convention of EMTZA Region USY. 27 KCUSYers reunited with their regional friends and made many more at the weekend long event.

The convention focused on social justice and ways to impact the world in a positive way. We participated in a Social Action fair, where we made warm blankets and "cups o' soup," to "just add water" and have a warm and filling meal readily available. These were donated to a local homeless shelter. A local speaker and activist spoke about the lives of black families and interactions with the police in certain "lucky" or "unlucky" zip codes of St. Louis. We also learned about media-bias in Israeli news and ways to combat this and advocate for Israel in its foreign and internal struggles. The USYers had meaningful, thought-provoking programming throughout the weekend.



USY is Going to Minneapolis for Winter Shabbaton

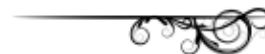
USY's Winter Shabbaton 2016 will be held January 15-17 at Beth El Synagogue in St. Louis Park, Minnesota. The theme of the weekend is EMTZA's Day Off (Ferris Bueller meets Shabbat). The cost is \$165 for USYers, and the registration deadline is January 4. For more information, contact Stef Williams at swilliams@bethshalomkc.org.

We rocked out at a Rick Recht concert on Thanksgiving night, had a 90's themed dance (in which Stefanie relived her youth!) and climbed through many mazes at the City Museum Saturday evening. It was a fun weekend full of bonding with over 200 fellow Jewish teenagers.



As always, Kansas City represented our chapter with many leaders stepping up and leading the entire region through the weekend. We shared our World Series Champion pride with the entire region as well!

We all share the sentiment that after returning from a USY convention, functioning for the entirety of that following week is very difficult. We miss spending every minute of the day with some of our best friends and being surrounded by our wonderful community - constantly filled with ruach and optimism. Emtza Kinnus 2015 was not our first convention with USY, and the post-convention depression has gotten worse with each one. We cannot imagine a time when our USY friends were not such important parts of our lives or when we were not a part of such a great organization. The convention chairs and the regional board never fail to impress us with their convention planning. We and our fellow USYers had an amazing time and are counting the days until we fly to Minneapolis for Winter Shabbaton in January.



KCUSY January Events

Wednesdays, January 6, 13, 20, 27

Wednesday Night Programs

Friday, January 8

Kabbalat Shabbat at Village Shalom

Friday, January 8

Rimon Taste of Italy Congregational Dinner

Friday - Sunday, January 15-17

Winter Shabbaton in Minneapolis



CELEBRATING LIFE CYCLE EVENTS

B'nei Mitzvah

Jack William Levine

January 16/6 Shevat



Jack's parents are Kate and Jay Levine. Grandparents are Linda & Arthur Levine and Alice & James Algie. His sister is Sophie Levine. Jack attends Harmony Middle School, and his special interests and activities include playing sports, particularly basketball, football and soccer, playing the trumpet and hanging out with friends.

His Mitzvah Project is volunteering with The Special Olympics through Blue Valley Recreation. Jack worked with kids and adults assisting them in bowling. Please join Jack and his family in worship.

Abigail Paulette Davis

January 30/20 Shevat



Abigail's parents are Karen & Matthew Davis. Grandparents are Bob & Marsha Polster of Columbus, Ohio and Steve & Mary Davis. She has two siblings, Noah & Olivia. Abigail attends Hyman Brand Hebrew Academy and her hobbies include volleyball, basketball, art and drama.

Abigail's Mitzvah Project is tutoring children. Relatives and friends are invited to worship with the Davis family and attend the Kiddush Luncheon following services.

Addison Benjamin Brand

February 6 / 27 Shevat



Addison's parents are Jonathan & Jasmine Kaplan and Elliot Brand. Grandparents are Dr. Stanley & Margie Brand, Dr. Jeanne Hayes-Alaman and Marian Kaplan. Addison has three siblings; Audrey, Evelyn & Macie. He attends Hyman Brand Hebrew Academy and his hobbies include playing chess, basketball and cross country running.

Relatives and friends are invited to worship with the family and attend the Kiddush Luncheon following services.

Sisterhood Gift Shop Registries

Besides having a Bar and Bat Mitzvah Registry, our Sisterhood Gift Shop also has Wedding and Baby Registries. We have colored glass cups for the wedding ceremony and decorative items in which to save the shards as a keepsake. We carry a full line of modern Judaica, from Ani L'dodi dreidels to heart Tzedakah boxes. And for babies we have mezzuzot for the baby's room and new baby blessings. To register, contact Connie Simon at the Gift Shop, 913-647-7298 or by e-mail at sttokc@gmail.com.



Mazal Tov to...

Mickey & Marjorie Adler upon the engagement of their granddaughter Rachel Bernard to Gavi Horwitz.



CELEBRATING LIFE CYCLE EVENTS

Ecclesiastes 3:1

Happy Anniversary



January Anniversaries will be celebrated on January 16.
To sponsor a Kiddush contact Martha, 913-647-7283.

Day		Years
1	Jonathan & Denise Hankin	10
1	Jeffrey & Farrah Udell	4
2	Scott & Susan Krigel	39
2	Bryan & Janet Unterhalter	22
2	Victor & Annie Wishna	6
6	Daniel & Brodie Gold	14
6	Mark & Mara Lambert	8
6	Gary & Marcy Rydell	31
8	Donald & Sharon Cohen	60
8	David & Amanda Palan	10
8	Miles & Sally Ross	38
9	David & Sylvia Radasky	44
9	Jimmy & Sunni Rosenbloom	33
16	Bill & Jodi Rosenthal	33
18	Aaron Tarjan & Elizabeth Willen	12
20	Andrew & Vicki Widman	14
25	Jerry & Helene Ginden	51
25	Jeff & Arlene Misler	47
26	Alec & Emily Weisberg	8
28	Mike & Sharon Milens	49
28	Bob & Barbara Palan	48

The Art Presentation Event Revealed a Magical Story

Burns & Mc
Donnell and Van
Trust Real Estate
found art at the old
building on 95th
Street. They were
rolled up in a plastic
tube for almost 40



years in the base-
ment. The works were life-sized paintings of the designs
for stained glass windows depicting the three previous
Beth Shalom locations and the Western Wall in Jerusalem.
These renderings are done with gouache paint.

The art is spectacular. Majestic, they now preside over
the Great Hall, infusing it with color, depth, history and
connection to our history. Each piece, over 6 feet tall, has
wonderful oranges and blues, greens and browns.

The companies preserved them and had them
framed, and in November they presented them to us. The
people involved told a story about the connection between
the two companies to CBS and our connection to the
community.

Denim & Diamonds Acknowledges our Benefactors

Sponsors

- Mike & Gloria Azorsky
- Gary & Debby Cortés
- Art & Diane Federman
- Steve & Milisa Flekier/Roger & Berenice Haberman
- Jeff & Rhonda Fromm
- Ron & Susie Goldsmith
- Hanan & Natalie Hammer
- Norman Kahn, Jr. & Diana Winyard
- Kurt & Stephanie Kavanaugh
- Neil & Blanche Sosland

Donors

- Alysa Rene Boutique
- Boy Scout Troop 61

- Commercial Actors Studio
- Dahlia Berger
- Facets Jewelry
- Glitters Fine Jewelry
- Roger & Berenice Haberman
- Chad King
- Kim Matsil
- Norman Kahn, Jr. & Diana Winyard
- Howard & Gayle Ranen
- Toners Jewelers
- Diana Winyard
- Worley's Liquor

Calling Chairperson

- Kurt Kavanaugh

Of Blessed Memory

We express condolences to our Beth Shalom Members, their Families and Friends.

Steven Litt, z"l, November 22 - 10 Kislev

Sara Ruth Krantz, z"l, December 11 - 29 Kislev

Karen Lynn Pell, z"l, December 14 - 2 Tevet

Yahrtzeits

Join us for morning or evening minyan to say Kaddish for your loved one. See service schedule, page 11.

Jan. 1 - 20 Tevet

Albert K. Ball
Hayman Barewin
Sam Baum
Morris Brown
Boris Galitzky
Sarah Ginsberg
Harry Gitterman
Dorothy Gottlieb
Livie Lee Halperin
Seymour Dean Traxler
Rose Wolfson

Jan. 2 - 21 Tevet

Harriet Azorsky
Baila Kamar Baellow
Kelman Louis Bovos
Arvie Goldstein
Henry Hakan
Daniel Hollub
Earl Katz
Isadore Marks
Esther Morris
Shirley Moskovitz
Benjamin Portman
Betty Lee Shenker

Jan. 3 - 22 Tevet

Paul Bayzman
Max Benjamin
Gustav Einhorn
Jacob Grinpas
Arthur Harris
Sherry Kaplan
Isadore David Levine
Mildred Lipsey
Badannah Silverman
Sidney Simon
Sarah Smith
Rita Joyce Tilzer
Bessie Turock

Jan. 4 - 23 Tevet

Martin Brenner
Morris H. Dunn
Bertha Dworkowitz
Bessie Ellis
Helen Feingold
Anna Grossman
Thelma House
Rose H. Jacobson
Daniel Markel
Solomon Rubinfire
Rachel Ella Schere
Irving Schoenwald
Rebecca Schreiber
Mollie Schwartz

Jan. 5 - 24 Tevet

Roy Bisman
Robert Blond
Felicia Sue Kisluk
Ella Cohen Lieberman
Rose Millstein
Leonard Rifas
Fannie Rothschild
Mary Schlafer Taxman

Jan. 6 - 25 Tevet

Sam Barash
Gustave Eisemann
Gilbert Katz
Manuel Levine
Julia Liebershon
Archie Louis
Reuben Peltzman
Milton Silverman
Phillip Solomon
Fannie Spector
Rose Stolowy
Phillip Wider

Jan. 7 - 26 Tevet

Gussie Bell Cohen
Yetta Czarlinsky
David Diamant
Sanford Hakan
Samene Lesser
Otto Sherry
Stanley M. Siegel
Ben H. Simons
Stephen Wayne
Lena Wienshienk
Shlomo Yeshiah

Jan. 8 - 27 Tevet

Donald Alpert
Minnie Bayzman
Benjamin Finkle
Thomas Alan Goldenberg
Jennie Gordon
Herbert Greenberg
Helen Kaufman
Victor Lerner
Louis Yudkofsky

Jan. 9 - 28 Tevet

Diana Altschuler
Sam Berman
Tavia Blender
Martin Brenner
David Brockman
Karl Eisemann
Jean Burstein Glazer
Abraham Jacob Granoff
David Hadas
Herbert Hakan
Rose Josephson
Daniel Katzman
Clara Kraft
Jacob Rabenowitz
Joseph Ruback
Anna Saver
Mushi Selichonok
Jerry Taube
Samuel Wallman

Jan. 10 - 29 Tevet

Julius Behrman
Joseph Biederman
Pauline Blonsky
Deanie Collins
Leo Eveloff

Margaret Goldman
William Goodman
Stephen J. Greenstein
Ruth Hyman
Raydelle Josephson
Wolf Kort
Israel Levin
Isaac Lieberman
Sherman Rozenblit
Sarah Smith
Isadore Paul Stolov
Richard Wasserman
Anna Wolberg

Jan. 11 - 1 Shevat

Joseph Greenblot
Essak Levitch
David Luke
Sophia Matzdorff
Abraham Osep
Abe Oshry
Nat Pfefer
Lee Diment Seelig
Rose Seiffer
Marion Stolov
Henry Walker

Jan. 12 - 2 Shevat

Herman Asotsky
Bruce Bovos
Della Fox
Paul J. Frischer
Rebecca Katz
Rose Kurtz
Helen Lieberman
Norman Yarmo

Jan. 13 - 3 Shevat

Jennie Abend
Morris Berman
Marvin Brown
Samuel Ray Burnstein
Beila Gitel Dorfman
Molly Eisman
Barney M. Friedman
Bertha Gershon
Dora Jennie Gerson
Isaac Gilgus
Harry Katz
Ksell Kusnetzky
Edmund Oelsner
Zelda Penner
Morris Rolsky
Anna Rosenblum
Milton Shapiro
Harry Sheskin
Libbie Wallman
Lois Katz Weiner

Jan. 14 - 4 Shevat

Samuel Blond
Ida Cohen
Martin Finkelstein
Martha Forrest
Lillian Elizabeth Gelb
Nathan Golding
Kalman Grollman

Esther Hoffman
Isaac Maier Isenberg
Rose Kahn
Michael H. Katz
Bertha Kowolsky
Bertha Matters
Philip Phillips
Ida Rebecca Portman
Richard Rapaport
Rubin Shapiro
Max Trossman
Sheindel Yukon

Jan. 15 - 5 Shevat

Granum Chernoff
Ceril Dallen
Daniel Davis
Helen Eisen
Louis Goldman
Sarah Jacobson
Rose Lefkowitz
Jack Meyers
Nathan Nelkin
Blanche Pelofsky
Norman Weiner

Jan. 16 - 6 Shevat

Louis Baranov
Eva Cooper
Mary Farber
Ester Goodman
Meyer Grollman
Barney Karbank
Rose Katz
Rose Shapiro Katzeff
William S. Litwin
Milton Searles
Lena Segal
Samuel I. Winer

Jan. 17 - 7 Shevat

Jake Cohn
Evelyn Coleman
Molly Epstein
Elliot N. Gale
Barnett Gottlieb
Leon Joseph
Louis B. Kalinsky
Louis Krashin
Melvin E. Krigel
Tillie Kusnetzky
David Lieber
Minnie Miller
Bertha Pittell
Rebecca Leah Schlaifer
Abe Sosland
Sophia Taxman

Jan. 18 - 8 Shevat

Simon Cohen
Harry C. Feingold
Leo Kaufman
Dora Kessler
Louis Luzer Lipszyc
William J. Rose
Mollie Spitaufsky
Lester Tonopolsky

Jan. 19 - 9 Shevat

Sidney Cohen
Dorothy Cumonow
Frank Joseph
Celia Levin
Betty Nusbaum
William Schlosberg
Molly M. Shalet
David Sporn
Celia Stocker

Jan. 20 - 10 Shevat

Claire Miror Bell
Daniel Labe Bortnick
Jacob Cohen
Israel Finkelstein
Sylvia Gershon
Solomon Goldberg
Marvin Max Greenberg
Sheldon Hollub
Harry Isenberg
Gittel Levin
Sara Levitt
Jack Louis
Abraham Nisenkier
Fannie Ruback
Bee Sherman
Sam Silverman
Fanny Walker

Jan. 21 - 11 Shevat

Dorothy Chapman
Myrtle Hoffman
Cohen
David Gottlieb
Herman Klutz
Sam Laner
Bertha Meyer
Henry Present
Irving Quito
Raymond Rittmaster
Harry Sandler
Emanuel Schupan
Eudice Shlensky
Salman Silberman
Ida Bell Sorkin
Rose Rostov Tibbet

Jan. 22 - 12 Shevat

William D. Clayman
Harry Cohen
Rose Diamond
Isadore Glass
Joe Greene
Dan Indin
David Klein
Isadore Levitch
Solomon Lipsky
Phyllis Krigel Rips
Irving Schick
Ella Silberman
Harry Sokoloff
Harris P. Wolfberg

Jan. 23 - 13 Shevat

Sarah Abrams

Morris Cohen
Daniel Fein
Ida Weiner Fox
Samuel J. Gershon
Robert M. Gluck
Mary Gordon
Emanuel Greenberg
Raschi Mali Kamen
Rose Kanter
Benjamin Lieberman

Jan. 24 - 14 Shevat

Goldie Deiboch
Charles Gidinsky
Charles Kauffman
Harry Milens
Jean Peltzie
Rheva Spitcaufsky
Luba Vinick

Jan. 25 - 15 Shevat

Josephine Bernstein
Bessie Bratt
Steve Duberstein
Lewis Hoffman
George Krumholz
Solomon Michelson
Paula Pender
Marti Rabin
Josephine Rosenblum
Eli Rostov
Samuel Rostov
Frank H. Rotman
Phillip Schlaifer
Ernest D. Seiden
Bessie Shultz
Isaac Werby
Sam Winette

Jan. 26 - 16 Shevat

Yetta Zeldin Barsky
Max Bertman
George David
Dubinsky
Beatrice Sotsky Feder
Ann Gale
Elka Gordon
Rina Gordon
Sarah Hammer
Harry Karosen
Idelle Kopitnik
Sol Mendy
Anna Oppenheimer
Sarah Jane Resnick
Dora Sandler
William Smith

Jan. 27 - 17 Shevat

Neiman Abrams
Alex Becker
Norman William
Blender
Ralph Jacobsen
Michael Kupperstein
Rebecca Levine
Anna F. Magilow
Meyer Rosenberg

Anna Rosen Soroka
Louis Zimmerman

Jan. 28 - 18 Shevat

Sydney Cerier
Sol Glass
Anna Halperin
Max Katz
Walter Rosenthal
Deborah Sanell
Pauline Shapiro
Renee Swartz
Lily Mae Winer
Mary Zenitsky

Jan. 29 - 19 Shevat

Rubin Baellow
Rebecca Blender
Louis Burnstein
Sally Goodman
Nochum Herzmark
Morris O. Kanter
Lena Max
Ralph I. Passman
Mabel B. Rapschutz
William Soslowitz
Joseph Taskar
Sarah Wechsler

Jan. 30 - 20 Shevat

Ike Baker
Max Blasbalg
Maurice Blond
Edward Adolph Devins
Irene Eisemann
Samuel Furman
Libby Harris
Jennie Hoffman
Lena Katz
Leo Kopec
Solomon Moskowitz
Joseph Plattner
Joseph Richard
Schlozman
Al J. Yarmo

Jan. 31 - 21 Shevat

Israel Adelman
Fannie Balot
Mollie Eckstein
Harold Grace
Esther Hershman
Jessie Joseph
Jake Klutz
Harry Podoll
Jacob Rotman
Jennie Rubenstein
Abe Tabolsky
Nathan Tempofsky
Abram Wallman
Morris I. Yukon



Ada Hoffman Camp Ramah Scholarship Fund

In Memory Of
Carlos F. Cortés
Florence H. Cortés
Gary & Debby Cortés

Adult Education Fund

In Memory Of
Deborah Jacobson
Walter & Helaine
Reed

Benjamin Ryweck Torah Fund

In Honor Of
Mila Bratt's Birth
Joan March
In Memory Of
Rusty Rice
Janet Ryweck
Joan March
Isaac Zale
Minnie Zalusky
Susan Zale

Beth Shalom Chesed Committee Fund

In Memory Of
Sara Krantz
David & Shelley
Fishbach
Jeffrey Roitman
& Kay Grossman
Steven Litt
Sheldon & Stephanie
Pessin

Beth Shalom General Fund

In Honor Of
Marlene Katz's
Speedy Recovery
Alan & Mindi Jerwick
Ari & Teddy
Natenberg's 5th BD
Todd & Reena
Natenberg
In Memory Of
Evelyn Alexander
Edward & Cheryl
Alexander
Marjorie Alperson
David & Carol Porter
Ida Bamberger
Albert Bamberger
Anne Baum
Joe Baum
Robert & Linda Baum
Frances Berger
Arthur & Margaret
Berger

Irwin Block
Blossom Block
Max Dubin
Sol & Nora Dubin
Harry Eisman
Marshall & Hope
Talbot
Sol Epstein
Stuart & Sharon Pase
Dora Freed
Randy & Dini Freed
Marvin Gibian
Howard Bormaster
Norman & Alison
Heisler
Kenneth & Judi
Mennenga
Larry & Roberta
Rosen
Joe & Fran Wolf
Leebert Glass
Paul & Janet Leeds
Anna Gondos
David & Judy Jacobs
Linda Granat
Mark & Diane
Davidner
Bernard & Joan
Erdman
Jake Greenberg
Noreen Greenberg
Louis Grossman
Norman & Charlene
Meltzer
Joseph Gutovitz
Allen & Gail Gutovitz
Rose Hershon
Eugene Kopitnik
Irving Malashock
Shirley Malashock
Nathan Jagoda
Steven Jagoda
Naum Khalemsky
Yuly & Asya
Khalemsky

Sara Krantz
Frank Lipsman
& Janet Mark
Steven Litt
Edward & Cheryl
Alexander
Scott & Susan Krigel
Frances Mandelbaum
Mark & Ellie
Mandelbaum
Kate Meltzer
Norman & Charlene
Meltzer
Michael S. Rhodes
Michael & Gabrielle
Handler
Max Rotman
Ross Tonkens
Barbara Shapiro
Judith Shapiro
Samuel Shenker
Hanan & Sharon
Steinzeig
Leonard Shopmaker
Nancy Morais

Margaret Smith
Rita Myer
Jo Ann Smith
Robert Smith
Anna Swartz
Jeffrey Chaiken
Virginia Chaiken
Milton Tate
Scott & Sara Goldstein
Fred Waldner
Robert Waldner
Hanan Wedlan
Elizabeth Wedlan
Helen Weinstein
Beth El Synagogue
Richard Levitt
Connie Odum
Louis Zolotor
Robert Corchine
& Andrea Poisner

Beverly & Harvey Bodker Endowment Fund

In Memory Of
Beverly Bodker
Harvey Bodker

Cemetery Maintenance Fund

In Memory Of
Nettie Covitz
Randy & Joan Covitz
Walter Eichenwald
Howard Eichenwald
Jennie Fleschman
Sheldon & Jackie
Fleschman
Clarence Gershon
Paul Gershon
Marvin Gibian
Marian Berkowitz

Eisemann Family Fund

In Honor Of
Anna Clauer's Bat
Mitzvah
Gustave & Elinor
Eisemann

Eugene & Shirley Novorr Tots for Torah Fund

In Memory Of
David Ginsberg
Shirley Novorr

Florence & Meyer A Kaplan Sukkot Festival Fund

In Honor Of
Jerry Barash's Speedy
Recovery
Florence Kaplan

In Memory Of
Marvin Gibian
Gale Kagan
Florence Kaplan
Gale & Maxine
Grossman
Religious
School Fund

In Memory Of
Marvin Gibian
David & Lynne Bock
Louis Grossman
Maxine Grossman
Harriet Mann
Morton Mann

Gershon Hadas Scholarship Fund

In Memory Of
Anne E. Hadas
Rabbi Gershon
Hadas
Samuel & Judy
Florman
Hedva Glickenhauz

Hanan Wedlan Family Fund

In Memory Of
Hanan Wedlan
Mitch & Lisa
Hamburg
Susan Wedlan

Hazzan Ben-Yehuda's Discretionary Fund

In Honor Of
Rabbi David
Glickman
Marvin Szneler
Sara Sidel's Bat
Mitzvah
Susie & Paul Blackman
In Memory Of
Rose Bayzman
Steven & Marcia
Schorr

Helen Rae & Sydney Cerier Teacher Development Fund

In Honor Of
Selma Dreiseszun's
90th BD
Roberta & Helen Rae
Cerier
In Memory Of
Martha Cohn
Roberta & Helen Rae
Cerier

I & R Polsky Special Events Fund

In Memory Of
Marvin Gibian
Larry & Ellen Polsky
In Honor Of
Maxine Grossman's
90th BD
Larry & Ellen Polsky

Jacob H & Rose Levine Teacher Development Fund

In Honor Of
Jill Goldstein's
Speedy Recovery
Peter & Beverly
Newman

Joel Polsky USY Fund

In Honor Of
Elyse Block's BD
Larry & Ellen Polsky

Karbank Family Fund

In Memory Of
Barney Karbank
National Council of
Jewish Women

Kiddush Fund

In Honor Of
Marlene Katz's
Speedy Recovery
Marvin & Carol
Goldstein
In Memory Of
Rose C. Silverberg
Brett Weiner
Harold Kaseff
& Rhea Salasche

Marcia Eveloff Lechem Fund

In Memory Of
Alvin Capito
Rose Capito
Shirley Capito
Marlene Capito
Martha Cohn
Herbert & Barbara
Simon
Sara Krantz
Jimmy & Sonia
Rosenbloom
Ben Lerner
Alan & Tina Chapman
Paul Rosenthal
Sam & Danielle
Levine

Mendel & Sarah Small Fund

In Memory Of
Mendel Small
Marshall & Mary
Small

Mt Carmel Cemetery Fund

In Memory Of
Samuel Lichtor
Jeffrey Levine & Reed
Fletcher
Sharon Weinstein
Marc & Linda Turner
Isaac Zale
Susan Zale

Naman, Pollack, Block Youth Fund

In Honor Of
Marlene Katz's
Speedy Recovery
Randall & Elyse Block

Neil F Miller Endowment Fund

In Memory Of
Paul Rosenthal
Sam & Danielle
Levine

Rabbi Glickman's Discretionary Fund

In Memory Of
Marvin Gibian
Anne Bratt
Stewart & Esther Stein
Linda Granat
Anne Bratt
Samuel Katzman
Meyer Katzman
Sara Krantz
David Gale
& Gina Kaiser
Ruth Litvien
Max Mendell
Lawrence & Phyllis
Kalender
Neil Meltzer
Edward Meltzer
Carrie Silverman
Dorothy Kaufman

Romotsky, Price, Cortés Genetic Testing Fund

In Honor Of
Debbie Cortés's BD
Harold & Janet Price

Rose Family Early Childhood Education Center

In Honor Of
Anna Clauer's Bat
Mitzvah
Susie & Paul Blackman
In Memory Of
Benjamin Fagin
Roger & Berenice
Haberman

Rose S Levine & Doris L Flam Arts & Education Fund

In Memory Of
Noah Adler
Milton & Marjorie
Adler
Rose Levine
Tiberius & Carla
Klausner
Todd Clauer & Mirra
Klausner

Sanford Dunn Merit Scholarship Fund For Study in Israel

In Memory Of
Sara Krantz
Patsy Shanberg

Sidney Ginsburg Endowment Fund

In Memory Of
Rosalind Ginsburg
Byron & Gerri
Ginsburg

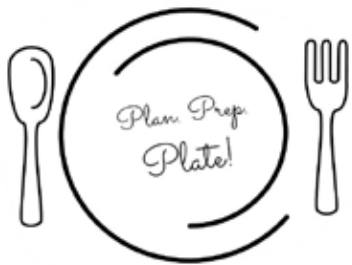
Stein Family Youth Fund

In Memory Of
Steven Litt
Mark & Diane
Davidner

Sylvan Siegler Scholarship Fund For Jewish Camping

In Honor Of
Gus & Elinor
Eisemann's 61st Ann.
Merna Siegler
In Memory Of
Linda Granat
Merna Siegler

Plan. Prep. Plate! on January 31



All parents of young children are invited to a fun afternoon of meal prep at CBS on Sunday, January 31, from 2:30 to 5:00 pm. Participants will take home three main dishes to be heated up within the week or frozen

for up to a month. Main dish options include Butternut Squash and Black Bean Enchiladas, Quinoa and Spinach Patties, and Veggie Jambalaya. You can choose one of each, three of one, or any combination you'd like to add up to three total dishes to take home.

Cost for four servings per meal is \$45.00 for members and \$55.00 for nonmembers. Cost for six servings per meal is \$65.00 for members and \$80.00 for nonmembers.

Space is limited! Register early to reserve your spot. Registration deadline is Wednesday, January 20, 2016. Online Registration Form: <http://bit.ly/planpreplate>.

For a paper registration form, contact Farrah Udell at 913-647-7282 or fudell@bethshalomkc.org.

See you in the kitchen!

Steppin' Out Welcomes Humberto Sierralta



Steppin' Out attendees on Sunday, February 21 will have the unique opportunity to be entertained by incomparable concert pianist and composer, Humberto Sierralta. Congregants, Sisterhood members, singles and couples and friends 60 and older are invited. The evening begins at 6 pm with dinner in Goldsmith Hall.

Humberto is an artistic personality with great creative force and musical versatility. He has composed numerous musical works in different expressions and styles and performed in prominent concert halls, TV and other venues in both Latin America and the United States. Over the years, he has received many awards and honors. As an outstanding composer, Humberto qualified to be a member of the American Society of Composers, Authors, and Publishers.

Your check made payable to Steppin' Out is your reservation. Please mail your check for \$15 per person, along with your contact information, to CBS, Attn.: Steppin' Out, 14200 Lamar, Overland Park, KS 66223.

Deadline for reservations is February 12. For further information, contact Linda Lessner, llessner@kc.rr.com or 913-897-0122.

PRS Fifth Graders

On Wednesday, December 9, Polsky Religious School Fifth Graders went on a special tour of the Sifrei Kodesh (sacred texts) in Rabbi David Glickman's study. They learned about all of the different types of books he uses in his work as a Rabbi.



Pictured left to right: Aaron Yurman, Melanie Hertzfeld, Shira Pellegrino, Miller Brown, Rabbi David Glickman, Maya Coppaken, Emma Sandler, and Leia Karty.

PRS Dates

January 3

No PRS

January 6

PRS resumes from winter break

January 17

No PRS for MLK weekend

January 20

Parent/Teacher/Student conferences (no classes)

January 24

PRS in session, Tu b'Shevat seder 3rd-7th grades

February 7

6th grade Tallit and Tefillin workshop 9:30 - 11:00 am

Tot Shabbat and Shabbat Kids' Club

Tot Shabbat and Shabbat Kids' Club will meet January 23. Join us for a fun-filled Shabbat with songs, prayers, and a story. Prior to services there will be a snack for both groups near the Youth Lounge. Tot Shabbat meets in room 111-112 and Kids' Club meets in room 114. Would you like to sponsor an upcoming Kids' Kiddush? Tot Shabbat and Shabbat Kids' Club still have months available this year for sponsorship! Contact Barea Nottberg at bnottberg@yahoo.com or Shira Zigler at shiramichele@yahoo.com. This program is underwritten by the Eugene and Shirley Novorr Tots for Torah Fund.

Congregational-Wide Events - See each department for their activities

Sunday	Monday	Tuesday	Wednesday	Thursday	Friday	Saturday
					1 Offices Closed 4:49 Candle Lighting 20 Tevet	2 5:50 Havdalah Shavuah Toiv 21 Tevet
3 22 Tevet	4 RFEC Classes Resume 23 Tevet	5 24 Tevet	6 PRS Classes Resume Warm Up America! 25 Tevet	7 Peltzman Class 26 Tevet	8 Rimon Service & Taste of Italy Dinner 4:55 Candle Lighting 27 Tevet	9 Birthday Shabbat Volunteer Shabbat 5:56 Havdalah Shavuah Toiv 28 Tevet
10 29 Tevet	11 Board of Directors Meeting 1 Shevat	12 2 Shevat	13 SH Board of Directors Meeting 3 Shevat	14 Peltzman Class 4 Shevat	15 USY Winter Shabbaton 5:02 Candle Lighting 5 Shevat	16 Bar Mitzvah of Jack Levine Anniversary Shabbat USY Winter Shabbaton 6:04 Havdalah Shavuah Toiv 6 Shevat
17 No PRS USY Winter Shabbaton 7 Shevat	18 Martin Luther King Jr. Day Offices Closed 8 Shevat	19 9 Shevat	20 No PRS, Parent/Teacher Conferences 10 Shevat	21 Peltzman Class 11 Shevat	22 5:10 Candle Lighting 12 Shevat	23 Sisterhood Shabbat Tot Shabbat & Shabbat Kids' Club 6:11 Havdalah Shavuah Toiv 13 Shevat
24 14 Shevat	25 Tu B'Shevat 15 Shevat	26 16 Shevat	27 PrayerWorks at Village Shalom 17 Shevat	28 Peltzman Class 18 Shevat	29 5:18 Candle Lighting 19 Shevat	30 Bat Mitzvah of Abigail Davis 6:19 Havdalah Shavuah Toiv 20 Shevat
31 21 Shevat Lechem						

Candle Lighting Blessing

בְּרוּךְ אַתָּה ה' אֱלֹהֵינוּ מֶלֶךְ הָעוֹלָם אֲשֶׁר קִדְּשָׁנוּ בְּמִצְוֹתָיו וְצִוָּנוּ לְהַדְלִיק נֵר שֶׁל שַׁבָּת.

Barukh ata Adonai Eloheinu melekh ha'olam, asher kiddeshanu b'mitzvotav vetzivanu lehadlik ner shel Shabbat.

January Service Schedule

Weekdays

Minchah:

Sunday-Thursday

6 pm

Shacharit:

Monday-Friday

7 am

Please Note:

Services on 1/18 will be at 8:00 am at Village Shalom.

Shabbat CBS

Kabbalat Shabbat: **Friday 6:00 pm**

Main Service: **Saturday 9:30 am**

Library Minyan: **Saturday 9:30 am**

Minchah: **January 2 4:49 pm**

Minchah: **January 9 4:55 pm**

Minchah: **January 16 5:02 pm**

Minchah: **January 23 5:10 pm**

Minchah: **January 30 5:18 pm**

Shacharit: **Sunday 8:00 am**



Shabbat Services and Sunday morning Shacharit will be held at CBS, 14200 Lamar.
Weekday Minyan will be held at Appleman Synagogue, Village Shalom, 5500 W. 123rd St.



Congregation Beth Shalom

14200 Lamar • Overland Park, KS 66223

www.bethshalomkc.org

Office: 913-647-7279 • Fax: 913-647-7277

CONGREGATION Beth Shalom

David M. Glickman, *Senior Rabbi*

Hazzan Tahl Ben-Yehuda,

Director of Congregational Learning

Elaine Levine, *Executive Director*

Alan L. Cohen, *Rabbi Emeritus*

Judy Jacks Berman, *Director, RFEC*

Norman Kahn, Jr. MD *President*

Bev Newman, *Scroll Editor*

Dahlia Berger, *Scroll Design*

The Congregation Beth Shalom Scroll (USPS531-420) is published monthly by Congregation Beth Shalom, 14200 Lamar Ave., Overland Park, KS 66223. Annual Subscription \$24.00. Periodical Postage Paid in Kansas City, MO. **DATED MATERIAL**

POSTMASTER: Send address changes to CONGREGATION BETH SHALOM SCROLL, 14200 Lamar, Overland Park, KS 66223. Scroll Deadline: The 1st of the previous month. Submit articles to the Administrative office before the deadline.

Congregation Beth Shalom, an egalitarian Conservative synagogue, is a welcoming community of individuals from diverse backgrounds, strengthening connections with God, Torah and the Jewish people through communal commitment to prayer, study and acts of loving kindness.

Looking Ahead:

Scroll Deadline:

January 4 for February

February 1 for March

No PRS

February 14

No RFCEC

February 15

Steppin' Out

February 21

PrayerWorks

February 24

Friday Night Lights

February 26

Scout Shabbat

February 27

Office Hours:

Monday - Thursday

8:30 am-5 pm

Friday

8:30 am-3 pm

Closed on Federal Holidays

Mt. Carmel Cemetery Summer Hours:

Monday, Wednesday

8 am - 5 pm

Tuesday, Thursday

Closed

Saturday

Closed

Friday & Sunday

8 am - 4 pm

National Holidays

9 am - 4 pm

Exceptions: Thanksgiving, New Year's Day & Christmas Day

Jewish Holidays

Closed

Phone: 816-398-9290

Sisterhood Gift Shop Hours:

Monday-Wed.

10 am-2:30 pm

Thursday

10 am - 1 pm

Friday

10 am - 12 pm

Sunday 9:30-12 pm PRS Days Only

Other Hours by Appointment Only

913-647-7298

Best Blondies Ever

Ingredients:

1/2 cup of soft margarine (from a tub), melted

1 cup tightly packed light brown sugar

1/4 cup egg substitute

1 tsp vanilla extract

1 cup all-purpose white flour

1/8 tsp baking soda

1/2 tsp baking powder

Pinch of salt

1/2 cup semi-sweet chocolate chips



Directions:

Preheat oven to 350 degrees (make sure that the oven is at the right temperature with an oven thermometer). Spray a square pan (8x8) with cooking spray and lightly flour it.

Whisk together the melted margarine and sugar in a bowl. Add egg substitute and vanilla extract and whisk. Add the flour, baking soda, baking powder, and salt, and mix it all together. Add in the semi-sweet chocolate chips. Spread the batter evenly in the pan. Bake for 20 minutes or until a toothpick comes out clean.

Allow to cool. Cut into squares.